



COMPOSING TOURNEYS

Closing date for all tourneys:
Thursday, 10 August 2017, 20:00
(Dresden local time)

Contents

Four weeks composing tourneys (open to congress participants only)	3
15th Ukrainian-Folk-Crafts Tourney (orthodox s#2)	3
10th ARVES Jenever-Tourney 2017 (studies)	4
17th Japanese-Sake Tourney (fairy h#2)	5
Champagne-Tourney (retro)	6
One week composing tourneys (to be announced 5 Augst 2017, 15:00)	8
Dresden six days tourney (official tourney, section s) (orthodox s#2-3)	8
Dresden six days tourney (official tourney, section h) (orthodox h#3.5-10)	9
Moskovskaya Matreshka-Tourney (orthodox h#2)	10
Potica-Tourney (fairy h#)	11
2nd Malbec-Tourney (orthodox h#2-3)	13

Version/correction: 18 July 2017

15th Ukrainian-Folk-Crafts Tourney

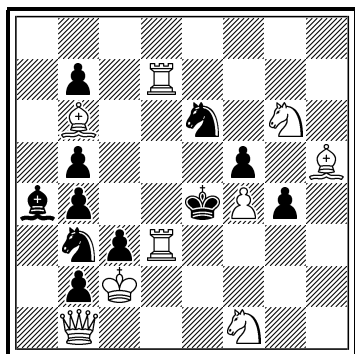
Theme:

S#2. O'Rey theme: in the diagram position, White has the same set response to all moves of a black thematic piece; moreover, set responses are available for White to all black moves but one; in the try (tries), White aims at creating a response to that move or to make it unplayable; one particular move by the thematic piece is the only refutation. After the key, there is some or other kind of change of play.

Illustration/Example(s):

Andrey Frolkin

Original



s#2

(9+11)

In the diagram position, any move by the black Se6 is met with a set white move: *1...Se~ 2.R7d4+ Sxd4#. If 1.R7d6,R7d5,Sh2?, then 1...g3! White tries to make this move unplayable: 1.Rg3? Se~ 2.Rd4+ Sxd4#, but 1...Sc5! (2.Bxc5 b6!) After the key **1.Re7!** the set variants are made unplayable; only 1...g3 remains, which is followed by a “radical change”: 2.R3d4+ Sxd4#.

Prizes: There will be three prizes, honorable mentions and commendations. The prizes are products of the Artistic Ceramics Opishnia Plant (Poltava province, Ukraine). The winner and the runner-up will also receive a brochure with the awards in all (14) previous Ukrainian Folk Crafts tourneys, including last year's tourney in Belgrade (2016).

Judge(s): Yevgen Reytsen, Nataliia Kucherenko

Entries to: Yevgen Reytsen, Nataliia Kucherenko (or kuren6135@gmail.com before 29 July)

Note: for congress participants only

10th ARVES Jenever-Tourney 2017

Theme:

Win or draw study with Umnov effect. White plays to a square previously vacated by a black piece (not a pawn). The thematic try should be that White makes the same move as a capture before the black piece vacates the square.

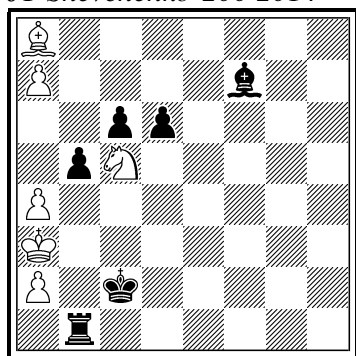
Illustration/Example(s):

1

Martin Minski

1st hon. ment.,

JT-Shevchenko-200 2014

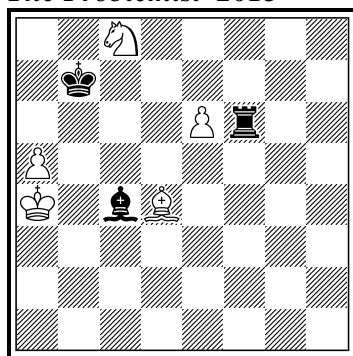


= (6+6)

2

Martin Minski

The Problemist 2015



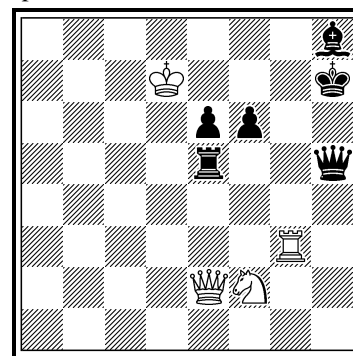
+ (5+3)

3

Martin Minski

Magyar Sakkvilág 2016

special Prize



+ (4+6)

Dia. 1: 1.Sa6 c5 2.Be4+ Kc3 3.a×b5 Rb2 **4.Bb1** (Umnov) R×b5 5.Ka4 Be8 6.Bg6 Bc6 7.Be8 Bxe8 8.a8=Q Rb4+ 9.Ka5 Rb5+ 10.Ka4 Rb8+ 11.Ka3 R×a8 = Thematic try: 3.B×b1? b4+ 4.S×b4 c×b4#; **Dia. 2:** 1.Sd6+ Kc6 2.e7 Bb5+ 3.S×b5 Re6 **4.Bf6** (Umnov) Kd7 5.Bg5 Re4+ 6.Kb3 Re5 7.Sd6 K×d6 8.Bf4 K×e7 9.B×e5 Kd7 10.a6 Kc6 11.Bd4 Kc7 12.Ba7 +- Thematic try: 1.B×f6? K×c8 =; **Dia. 3:** 1.Qc2+ Qf5 2.Se4 Bg7 3.Qh2+ Bh6 4.Qh5 (Umnov) Rd5+ 5.Ke7 Q×h5 6.S×f6+ Kh8 7.Rg8# Thematic try: 1.Q×h5+? R×h5 =

Prizes: One bottle of Jenever for the winner and two bottles of Grasovka

Judge(s): Martin Minski

Entries to: Marcel Van Herck

Note: for congress participants only

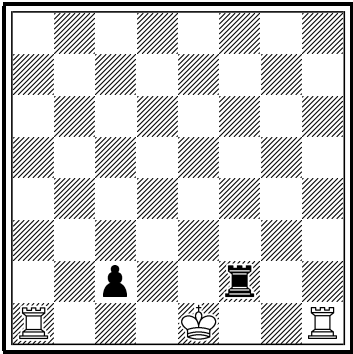
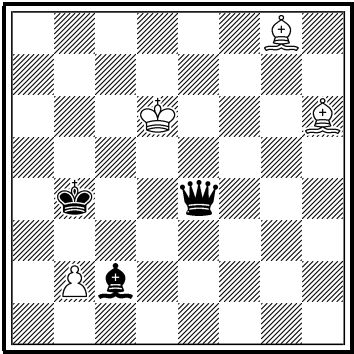
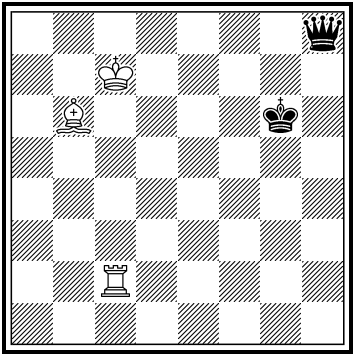
17th Japanese-Sake Tourney

Theme:

h#2, Partial Paralysis. When a piece X is observed by an opposite piece Y, X cannot move or capture like Y. (Note: Particularly, in the case of Y=X, this means Madrasi relation.) Castling is possible if and only if each single step of K is legal.

Any other fairy pieces and/or conditions are not allowed.

Illustration/Example(s):

<p>i</p>  <p>Partial Paralysis (3+2)</p>	<p>1 Tadashi Wakashima <i>Original</i></p>  <p>h#2 3.1;1.1 (4+3) Partial Paralysis</p>	<p>2 Ken Kousaka <i>Original</i></p>  <p>h#2 2.1;1.1 (3+2) Partial Paralysis</p>
---	--	--

Dia. i: 0-0-0 is possible because Ke1-d1 and Kd1-c1 are legal, but 0-0 is not possible because Kf1-g1 is illegal. **Dia. 1:** 1.Qc6 Bd5 2.Kc5 Be3# (3.Qe8??), 1.Qa8 Kc5 2.Qa2 Bd2# (3.Qd5??), 1.Ka3 Bc1 2.Qa4 b4#; **Dia. 2:** 1.Qa1 Bd4 2.Kf6 Rf2# (3.Qxd4??) 1.Qh1 Rh2 2.Kh6 Be3# (3.Qg1??) There are many tries, e.g. 1.Qa8 Rc6 2.Kf6 Bd4#?? but 3.Qa4!

Prizes: Bottles of Sake

Judge(s): Tadashi Wakashima, Toshiki Kobayashi, Yuji Kikuta, Yu Sasaki

Entries to: the judges

Note: for congress participants only (joint compositions with nonparticipants are admitted)

Champagne-Tourney

Theme:

Generalised (anti) Pronkin: – A square is occupied by an original piece and a promoted piece of same nature and colour. Original game-array squares (Pronkin) and promotion squares (anti-Pronkin) are excluded for this tourney, i.e. Pronkin and anti-Pronkin are not thematic!

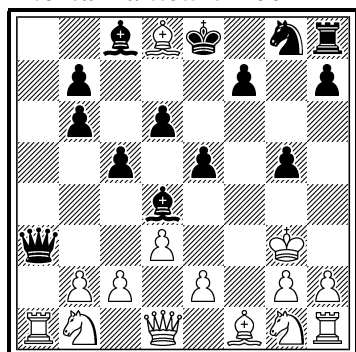
Two sections: A. Proof games, B. any other kind of Retro problems

In B section, in case of positions with few pieces, (such as can be found in Procas...), a piece is considered as original if it cannot be proved promoted.

Illustration/Example(s):

1

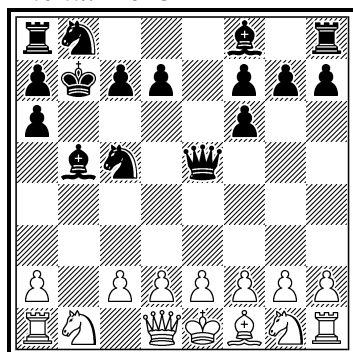
Ivan Denkovski
Gligor Denkovski
Thema Danicum 2001



SPG 12.5 (14+14)

2

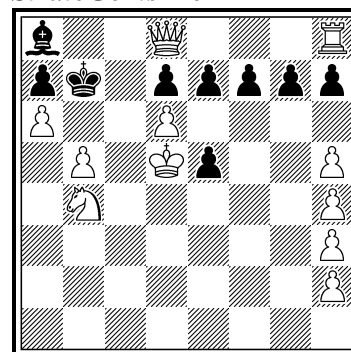
NON THEMATIC !!
Thierry Le Gleuher
Michel Caillaud
Phénix 2015



SPG 15.5 (14+16)

3

Andrey Frolkin
StrateGems 2011



Last 8 single moves? (11+9)

Dia. 1: 1.f3 e5 2.Kf2 Bc5+ 3.Kg3 d6 4.a4 Sd7 5.a5 Sb6 6.a×b6 a×b6 7.R×a8 Qf6 8.Ra1 Q×f3+ 9.Kh4 Qa3 10.d3 Bd4 11.Bg5 c5 12.**Bd8** g5+ 13.Kg3, 1.d3 g5 2.Be3 Bg7 3.Bb6 a×b6 4.a3! Ra5 5.a4 Rf5 6.a5 R×f2 7.K×f2 Bd4+ 8.Kg3 e5 9.a6 Qe7 10.a7 Qa3 11.a×b8=**B** c5 12.Bc7 d6 13.**Bd8** – The thematical square d8 is occupied by original wBc1 in the 1st solution and by a promoted wB (promoted on b8) in the 2nd solution.

Dia. 2: 1.b4 Sa6 2.Bb2 Sc5 3.Bf6 e×f6 4.**Sf3** De7 5.**Sd4** De5 6.**Sc6** Se7 7.**Sb8** Kd8 8.Sa6 b×a6 9.b5 Bb7 10.b6 Bc6 11.b7 Bb5 12.**b8=S** Kc8 13.**Sc6** Kb7 14.**Sd4** Sc6 15.**Sf3** Sb8 16.*Sg1* – f3, d4 and c6 would be “Champagne thematic squares”, **but the problem is doubly not thematic** because the 2 white Knights also occupy the Pronkin square g1 and the anti-Pronkin square b8.

Dia. 3: -1.a5-a6# **Kb8×Bb7** -2.Bc8-b7+ Kb7-b8+ -3.c7-c8=**B+** **Kb6×Bb7** -4.a5-a6+ Ka5-b6... The thematical square b7 is occupied by the original wLf1 and by wL who was promoted into on c8.

Prizes: Bottles of Champain for the winners in the two sections

Judge(s): Michel Caillaud

Entries to: Michel Caillaud (caillaudm@aol.com)

Note: for congress participants only (joint compositions with nonparticipants are admitted).

Maximum 3 entries per composer per section. Collaboration counts for one full entry. Maximum 1 non-computer tested entry per composer in section A. Non-computer tested entries should be submitted preferably before closing time to allow for “human testing”. If testing takes too long problems might not be considered.