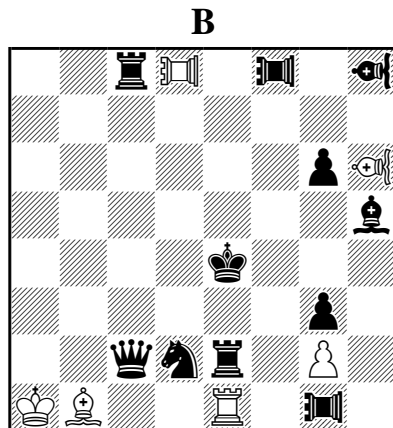
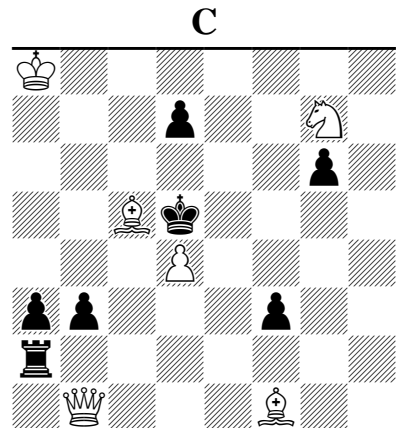


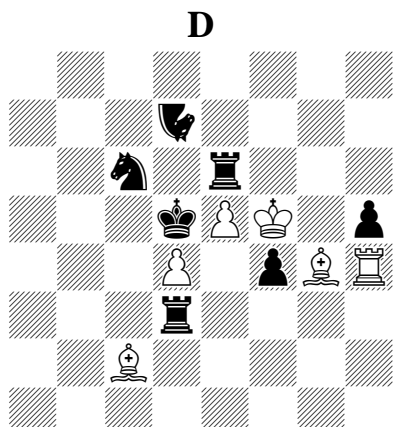
H#2 4.1.1.1 (7+9)
 Grasshopper 2+0 ♗,
 C+ Rookhopper 0+2 ♖,
 Bishophopper 0+2 ♝
 1 sol. = 1,25 pts



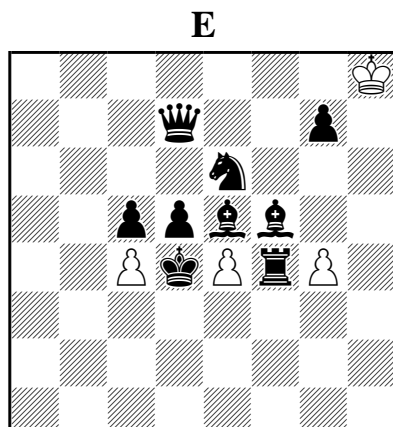
H#3 2.1.1... (6+11)
 C+ Pao 1+2 ♖,
 Vao 1+1 ♗
 1 sol. = 2,5 pts



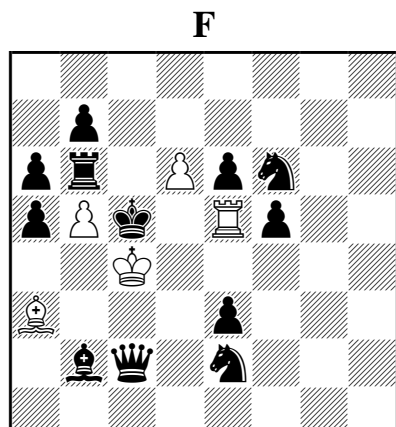
#2 Vertical (6+7)
 C+ cylindric
 chessboard
 write full solution



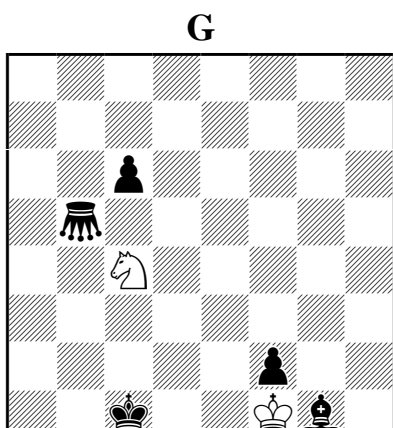
H=2 Ring chessboard (6+7)
 C+ Nightrider 0+1 ♞
 1 sol. = 5 pts



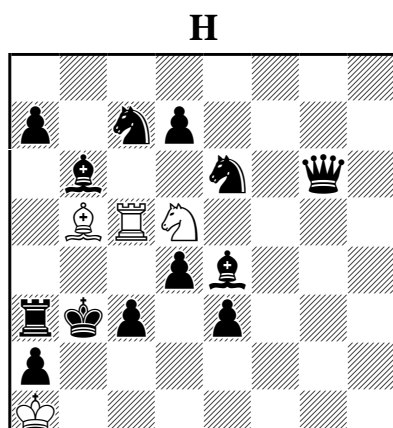
H#4 2.1.1... (4+9)
 C+ Circe
 1 sol. = 2,5 pts



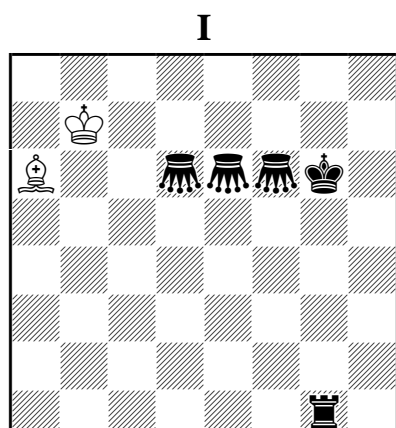
H#2 B: ♜a5→d4 (5+12)
 C+ Patrol chess
 1 sol. = 2,5 pts



S#6 B: ♜c6→h6 (2+5)
 C+ Maximummer
 Grasshopper 0+1 ♗
 write full solution



H#2 3.1.1.1 (4+13)
 C+ Take&Make
 1 sol. = 1,75 pts
 2 sol. = 3,25 pts



SH#8 3.1.1... (2+5)
 C+ Grasshopper 0+3 ♗
 1 sol. = 1,75 pts
 2 sol. = 3,25 pts